

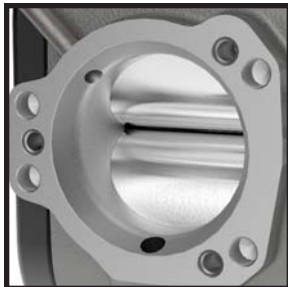
MORE AIR... MORE POWER!



CenterFlo's patented valve design utilizes a segment bored cylinder pair to precisely control air flow, eliminating the throttle blade and shaft to form an obstruction free bore.

Current Application:

- 2006-2016 Harley Davidson Big Twin
(Cable throttle only)

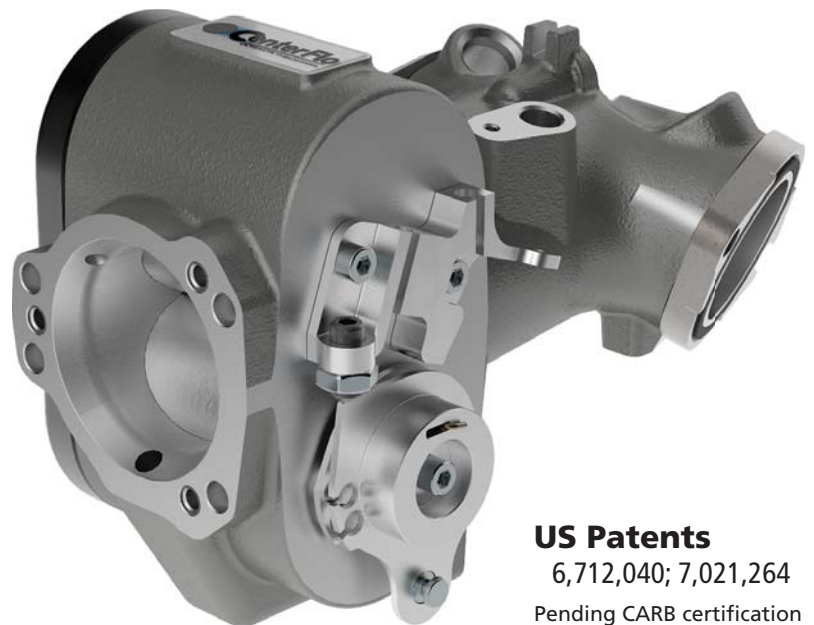


Idle Position



Wide Open

- Unobstructed air flow; no throttle blade or shaft
- Finer control throughout lower RPM range
- More mid-range torque
- Higher top-end horsepower
- 100% use of 50mm bore



US Patents
6,712,040; 7,021,264
Pending CARB certification